

Project of Independent Observation in Support of
the Control and Monitoring of Forestry Offences in
Cameroon

**Approved by the Ministry of
Environment and Forests**

Report N° 13a FR

Central Control Unit – Independent Observer Joint Mission

Title: AC¹ N° 2, UFA² 10-026

Location: Eastern Province

Date of mission: 24th July 2002

Company: ALPICAM

Independent Observer Team (Global Witness):

Ms Valérie Vauthier, Global Witness

Mr. Stuart Wilson, Global Witness

¹ ‘assiette de coupe’ – sub-division of a logging concession indicating the surface area to be cut in a particular year – trans. note.

² UFA – Unité Forestière d’Aménagement - Forest management unit, subdivision of a logging contract, established by the 1995 Forestry policy reform – trans. note.

TABLE OF CONTENTS

1. INTRODUCTION.....	1
2. MEETING OF 24 JULY 2002.....	1
3. RESULT OF ANALYSES OF THE CARTOGRAPHIC DATA.....	2
4. INDEPENDENT OBSERVER TEAM'S CONCLUSIONS, IN VIEW OF THE FURTHER INFORMATION	3
5. RECOMMENDATIONS	4
Annexe 1 : Verification Report	5
Annexe 2 : Attestation of Surface Area Measurement	6

1. INTRODUCTION

Following a control mission undertaken in the field by the Central Control Unit (CCU) in the presence of the Independent Observer team (see Independent Observer report 013Fr and CCU report – Mission in the Eastern Province from 28 to 31 May 2002), some questions were raised regarding the boundaries of the title, AC N° 2b, being logged by the Alpicam company, and regarding the cartographic data used by the control mission during their visit from 28 to 31 May 2002, provided by the geomatics department.

During a meeting on 23 July 2002, the Minister for the Environment and Forests, in the presence of the Forestry Director, the CCU Coordinator, CCU representatives and the Independent Observer team, recommended that a meeting be held as soon as possible with representatives of the Alpicam company in order to clarify this situation.

2. MEETING OF 24 JULY 2002

A meeting was thus held on 24 July 2002, attended by two representatives from Alpicam, the Forestry Director, the CCU Coordinator, a representative from MINEF³'s geomatics department, CCU representatives and the Independent Observer team.

During the meeting, Alpicam provided two official documents to clarify the issue:

- The verification report of the boundaries of AC Nos. 1 and 2 of UFA 10-026 N° 36/R/MINEF/DPE/DDBN/PFC NG, dated 8 June 2001 (annexe 1)
- Attestation of surface area measurement of AC Nos. 1 and 2 of UFA 2002 N° 020167 AMS/MINREST/INC/DCT/SC, dated 29 May 2002 (annexe 2)

These two documents provide for an area of 4,200 ha per *assiette de coupe*, following the division of the UFA to 1/30th, which revised the former 2,500 ha *assiettes de coupe* in line with article 67(5) Decree N° 2001/143/PM of 25 April 2001. The 'verification report of the boundaries' noted above gives precise geographic coordinates for Point A of AC No. 1, along with the locations of points B, C, D, E and F on the basis of which the exact boundaries of AC Nos. 1 and 2b can be plotted (see Annexe 1).

In conclusion, the meeting agreed that the Independent Observer team would, on the basis of data from the verification report, transfer the exact points of the boundary of AC No. 2b onto the GIS map of the area as soon as possible, including the GPS points taken in the field. As the GPS points had been taken in the field using UTM, and point A was described in geographic data, a conversion would be required.

³ MINEF – Ministry for the Environment and Forests – trans. note.

This would enable a clear determination of whether the logging points noted in the field were located inside or outside the boundaries of AC N° 2b. The CCU noted that a maximum margin of error of 200 metres was acceptable.

3. RESULT OF ANALYSES OF THE CARTOGRAPHIC DATA

- The GPS points taken at the far south of the slip road followed during the control mission (point 1) and at the southern boundary of the geomatics department's cartographic data for AC No. 2 (point 2) (see report 013Fr and CCU report of 28 to 31 May 2002), are located at the following UTM coordinates:

Point 1
32 N 0449898
UTM 0392483

Point 2
32 N 0449999
UTM 0393488

The corresponding geographic position being:

Point 1
N 03°33.046
E 008°32.934

Point 2
N 03°33.591
E 008°32.988

- Point "A" described in the verification report (see Annexe 1) provided by Alpicaam is located at the following geographic position:

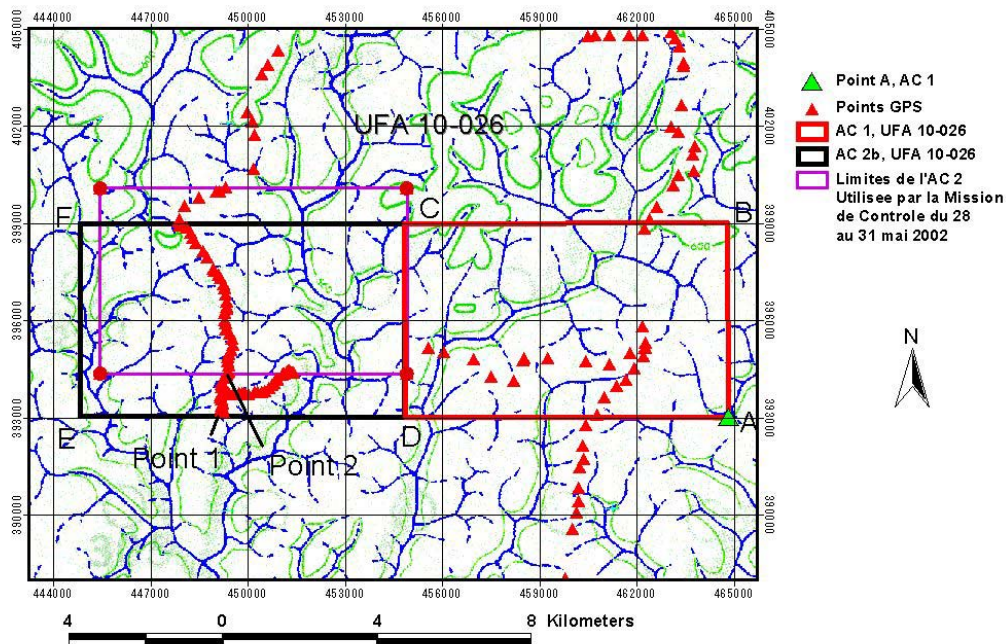
Geographic point "A"
N 03°33.000
E 008°40.000

The corresponding UTM position being:

UTM point "A"
32 N 0462979
UTM 0392393

- The UTM coordinates of point "A" and the GPS points taken in the field have been transferred onto the map below. On the basis of the location of point "A", and in line with the detailed description in the verification report provided in Annexe 1, AC Nos. 1 and 2b were replotted on this map.

**Localisation des AC 1 et 2, UFA 10-026, Selon le
Rapport de Verification des Limites No 036/R/MINEF/DPE/DDBN/PFC NG
(projection UTM Zone 33)**



4. INDEPENDENT OBSERVER TEAM'S CONCLUSIONS, IN VIEW OF THE FURTHER INFORMATION

- (1) The noted GPS points N° 1 and N° 2 are located to the north of line A- D- E, as this is situated at position N 03°33.000 (see Annexe 1). The end of the slip road is thus to be found inside AC N° 2b, as described in the verification report of the boundaries of AC N° 1 and N° 2 of UFA 10-026 N° 36/R/MINEF/DPE/DDBN/PFC NG, dated 8 June 2001.
- (2) The cartographic data for AC N° 2 provided by the CCU's geomatics unit and presented to the Independent Observer team during the mission from 28 to 31 May 2002 gives an inexact location for AC N° 2 in relation to the data in annexes 1 and 2.
- (3) The GPS points taken in the field for areas of current logging are located, according to the detailed description of the AC in the verification report presented in Annexe 1, within AC No. 2b.
- (4) If it is confirmed that annexes 1 and 2 represent the legal boundaries of AC N° 1 and N° 2 of UFA 10-026, Alpicam has logged within the boundaries of AC N° 2b of UFA 10-026 and is thus not guilty of logging outside the boundaries of this AC.

5. RECOMMENDATIONS

The Independent Observer team recommends that the appropriate MINEF department should verify the following, in order to attest or not to their legality:

- the verification report for the boundaries of AC N° 1 and N° 2 of UFA 10-026 N° 36/R/MINEF/DPE/DDBN/PFC NG dated 8 June 2001, including a calculation of the areas of the ACs to 1/30th of the UFA 10-026, that is, to 4,200 ha;
- the attestation of surface area measurement for AC N° 1 and N° 2 of UFA 2002 N° 020167 AMS/MINREST/INC/DCT/SC, dated 29 May 2002

This is with a view to corroborating the findings of this report.

Annexe 1 : Verification Report

1/3

MINISTRE DE L'ENVIRONNEMENT
ET DES FORETS

REPUBLIQUE DU CAMEROUN

DELEGATION PROVINCIALE DE
L'EST

PAIX-TAVAIL-PATRIE

DELEGATION DEPARTEMENTALE DE
BOUMBA ET NGOKO

08 JUN 2001

POSTE FORESTIER ET DE CHASSE DE
NGATTO

NGATTO LE

N° 036 /R/MINEF/DPE/DDBN/PC NG

RAPPORT DE VERIFICATION DES LIMITES DANS LES ASSIETTES DE COUPE NO 01 ET N° 02 DE L'UFA 10.026 APPARTENANT A ALPICAM.

Conformément aux instructions contenues dans la lettre n° 719/L
MINEF/DPE/DDBN/SP du 25 avril 2001, de Monsieur le Délégué Départemental de
l'Environnement et des Forêts de Boumba et Ngoko, une mission de vérification des
limites dans les assiettes de n° 01 et 02 a été effectuée le 08 juin 2001 par le Chef de
Poste Forestier et de Chasse de Ngatto.

A la suite de ces vérifications, les résultats suivants ont été constatés :

Le point A a pour coordonnées : 14°40' est et 3°33' Nord

A partir de ce point une ligne droite de 05 kilomètres Est tiré vers le NORD
jusqu'au point B.

Du point B une ligne est tirée vers l'Ouest sur 8,400 kilomètres pour atteindre
le point C

De ce dernier point on tire une ligne vers le SUD de 05 kilomètres pour le point
D

Enfin on rejoint les points D et A, 8,400 kilomètres pour l'assiette 01.

Pour l'assiette n° 02 les points C et D constitue leur base EST

De D on tire une ligne sur le prolongement de AD sur 8,400 kilomètres pour
obtenir E.

De même on a partir de C 8,40 kilomètres pour avoir F.

Tous travaux d'exploitation forestière effectués en dehors de limites ci-dessus
décrites sans
autorisation, seront sanctionnés conformément à la loi.



LE CHEF DE POSTE

Emmanuel MUKHO NGATTO
CHIEF DE POSTE

Annexe 2 : Attestation of Surface Area Measurement

MINISTERE DE LA RECHERCHE
SCIENTIFIQUE ET TECHNIQUE

REPUBLIQUE DU CAMEROUN
Paix – Travail – Patrie

INSTITUT NATIONAL DE CARTOGRAPHIE
BP. 157- Tél . 22 29 21- YAOUNDE

DEPARTEMENT DE CARTOGRAPHIE
ET DE LA TELEDETECTION

Yaoundé, le 29 05 - 2 002

SERVICE DE LA REDACTION CARTOGRAPHIQUE

020167

N° _____ AMS/MINREST/INC/DCT/SC

ATTESTATION DE MESURE DE SUPERFICIE

Superficie mesurée : 4 200 hectares

Demandeur : Apilcam

Carte (s) de référence Medoum à 1/200 000

Situation Administrative : Département de la Boumba et Ngoko
- Arrondissement de Yokadouma

Planimètre utilisé

Coradi 36 891

DESCRIPTION DE LA ZONE FORESTIERE

Le point de repère R des Assiettes jumelées de Coupe N°1 et N°2 de l'UFA 10 026 sollicitée par le demandeur se trouve sur la route Mbol II – Mwapak, à 1,1km à l'Est du passage de la rivière Adjeledjele. Du point R, en suivant la droite RA = 10,7 km d'azimut 0 grades , on aboutit au point A de coordonnées Géographiques 3°33' latitude Nord et 14°40' longitude Est, départ des Assiettes de Coupe concernées. Ces Assiettes sont limitées :

A l'Est, au Nord, à l'Ouest et au Sud, par les droites AB = 5,0 km d'azimut 0 grades ; BC = 8,4 km d'azimut 300 grades ; CD = 5,0 km d'azimut 200 grades et DA = 8,4 km d'azimut 100 grades .

Cette forêt couvre une superficie de **Quatre Mille Deux Cent** hectares.

La présente attestation lui est délivrée pour servir et valoir ce que de droit.

